

POLKA DE SALON

Composée pour le

PIANO

ET DEDIEE A SON AMI

Francis G. Hill

PAR

NATHAN B. CLAPP.

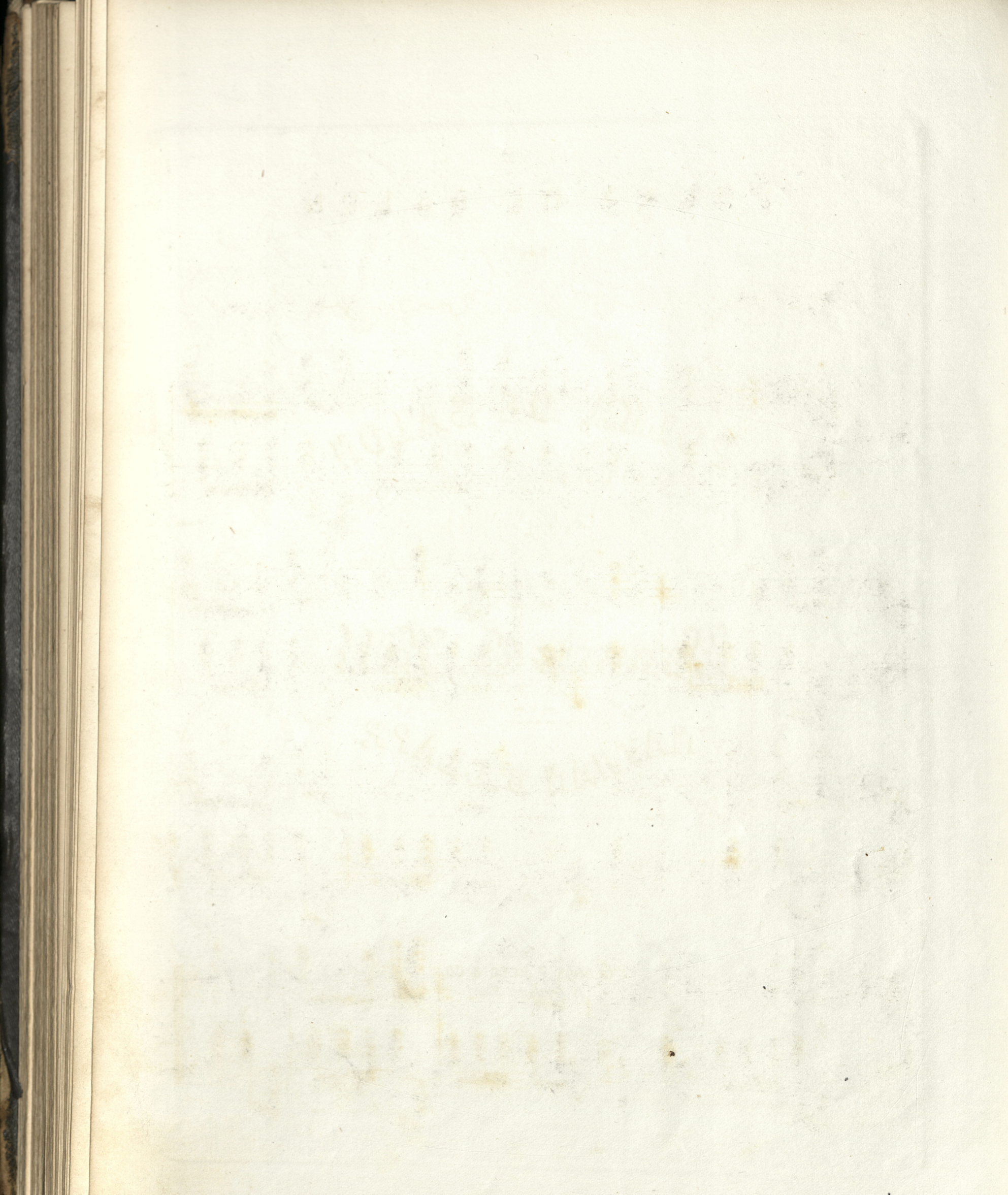
OP. 7.

32 c net.

Boston
GEORGE P. REED & CO.
17 Tremont Row.

Entered according to act of Congress A.D. 1851 by G.P. Reed & Co. in the Clerk's Office of the district Court of Mass.

Weller & Greene. Eng^{rs}



POLKA DE SALON.

Composé par

N. B. CLAPP.

PIANO.

f

8va

tr

8va

This page contains a handwritten musical score for piano, consisting of six systems of staves. Each system has a grand staff with a treble clef on the upper staff and a bass clef on the lower staff. The key signature is three flats (B-flat, E-flat, A-flat), and the time signature is common time (C). The score includes various musical notations such as chords, single notes, and slurs. Dynamics are indicated by *p* (piano), *sf* (sforzando), *fz* (forzando), and *f* (forte). The first system starts with a *p* dynamic and features a *sva* (sustained) marking above the right-hand staff. The second system includes a *cres* (crescendo) marking with a dashed line and a *cen* (crescendo) marking, followed by a *do.* (do) marking. The third system begins with a *p* dynamic and has a *sva* marking at the end. The fourth system also starts with a *p* dynamic and ends with a *sva* marking. The fifth system begins with a *f* dynamic. The sixth system continues with a *f* dynamic. The notation is dense, with many chords and complex rhythmic patterns.

gva 5

ritardando.

4

sf

8va

3 3 8va

con delicatezza.

8va

8va

fz

fz

cres - - - cen - - - do.

p leggiero.

Detailed description: This page of a musical score contains five systems of piano music. Each system consists of a grand staff with a treble and bass clef. The music is written in a key with three flats (B-flat, E-flat, A-flat) and a common time signature. The first system begins with the instruction 'con delicatezza.' and features a melody in the treble clef with triplet markings and a bass line with chords. The second system continues this texture. The third system introduces a forte dynamic (*fz*) and includes an octave sign (*8va*) above the treble clef. The fourth system features a crescendo leading to a fortissimo (*f*) dynamic, with an octave sign (*8va*) and a 'do.' marking. The fifth system concludes with the instruction '*p* leggiero.' and returns to a lighter texture with triplet markings.

8va

7

8va

Fine.